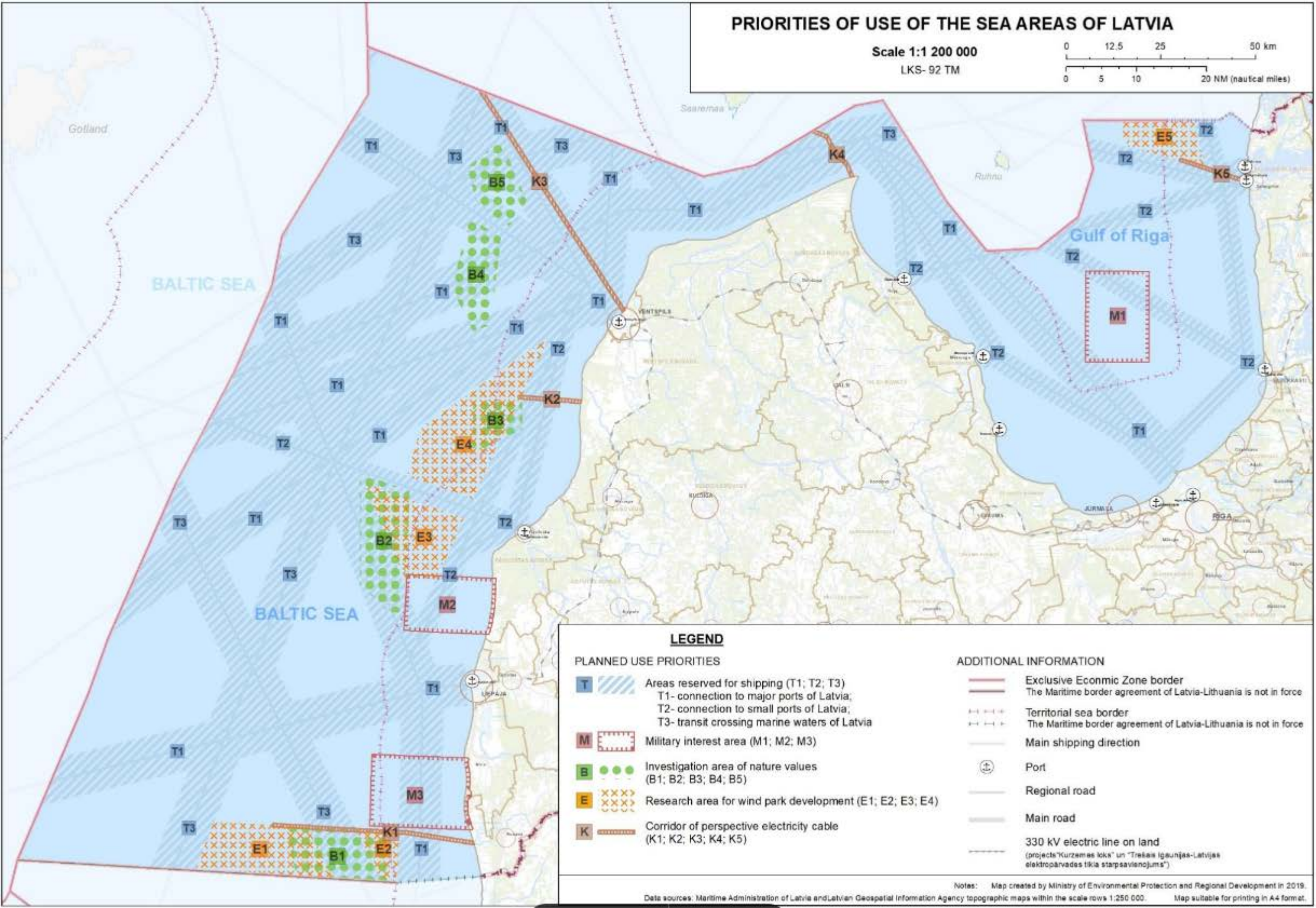
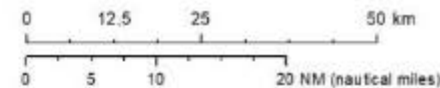


PRIORITIES OF USE OF THE SEA AREAS OF LATVIA

Scale 1:1 200 000
LKS-92 TM



LEGEND

PLANNED USE PRIORITIES

- T** Areas reserved for shipping (T1; T2; T3)
T1- connection to major ports of Latvia;
T2- connection to small ports of Latvia;
T3- transit crossing marine waters of Latvia
- M** Military interest area (M1; M2; M3)
- B** Investigation area of nature values (B1; B2; B3; B4; B5)
- E** Research area for wind park development (E1; E2; E3; E4)
- K** Corridor of perspective electricity cable (K1; K2; K3; K4; K5)

ADDITIONAL INFORMATION

- Exclusive Economic Zone border
- The Maritime border agreement of Latvia-Lithuania is not in force
- - - Territorial sea border
- - - The Maritime border agreement of Latvia-Lithuania is not in force
- Main shipping direction
- ⚓ Port
- Regional road
- Main road
- 330 kV electric line on land (projects "Kurzemes loka" un "Trešais Igaunijas-Latvijas elektroapgādes tīkla starpsavienojums")

Notes: Map created by Ministry of Environmental Protection and Regional Development in 2019.

Data sources: Maritime Administration of Latvia and Latvian Geospatial Information Agency topographic maps within the scale rows 1:250 000.

Map suitable for printing in A4 format.